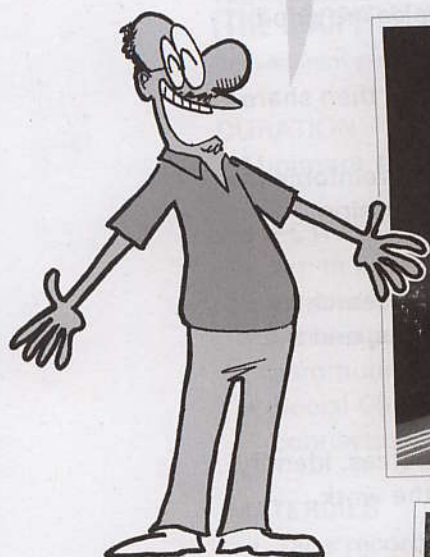


Next stop is

## Philadelphia, Pennsylvania, population 1.6 million people.



Like many older cities, economic resources here are severely depleted. Most people living in the so-called "inner core" of the city lack the most basic infrastructure – decent schools, adequate housing, safe streets.



Let's zoom in closer to a 10 square block area in North Central Philly, part of the neighborhood called **Germantown.**

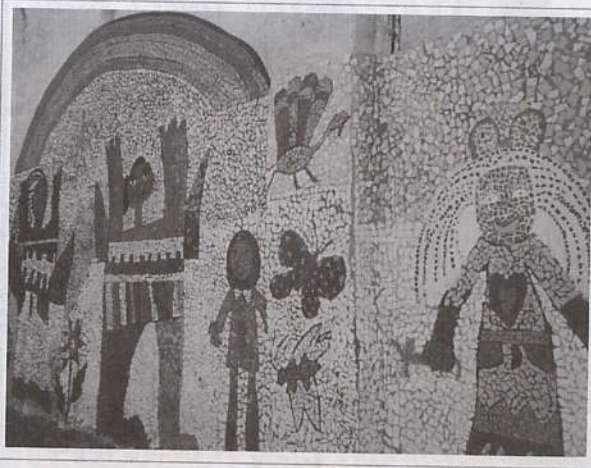
This is an especially hard-hit neighborhood in a city full of hard-hit neighborhoods...



During the 2000 census, 20% of the homes here (one out of every five) were vacant and half of all residents fell below the poverty line, with 41% of households earning less than \$10,000. Ten percent of the adults were unemployed, more than two times the national average.

This is not a new story at all.

Normally, people in neighborhoods like this have three choices: (a) accept the circumstances; (b) fight against improvements biased towards bringing in wealthier people; or (c) leave as soon as possible. None of these options is really viable.



Some people here had a different idea – they decided to “dig in” and rebuild, one vacant property at a time. All it took was an unusual partnership between an artist from across the ocean and a man from up the street, to make things begin to happen.

Meet master mosaic artists **Lily Yeh** and **James Maxton**, just two of the 10,000 individuals who live, work and play within the boundaries of “**That Luminous Place.**”

